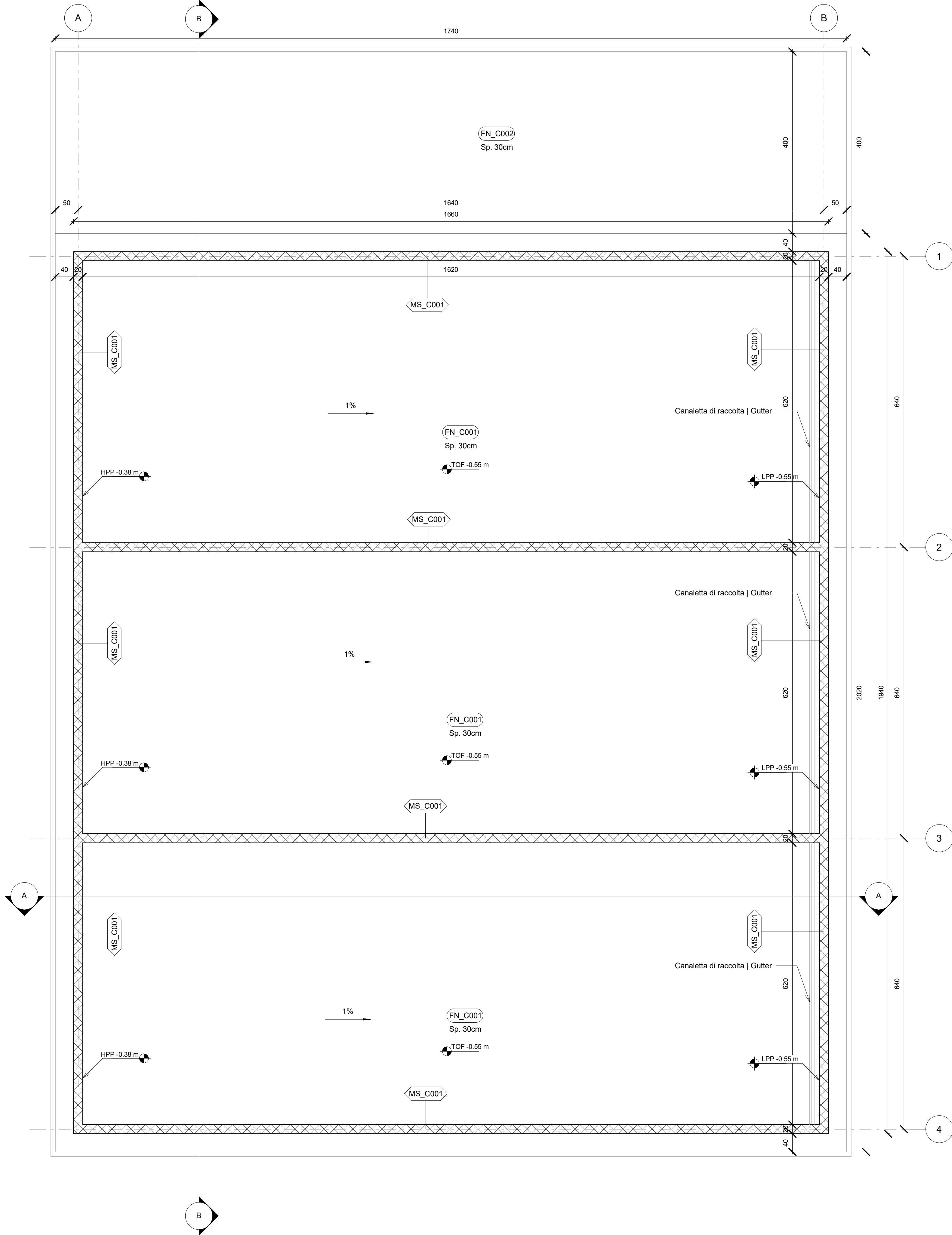
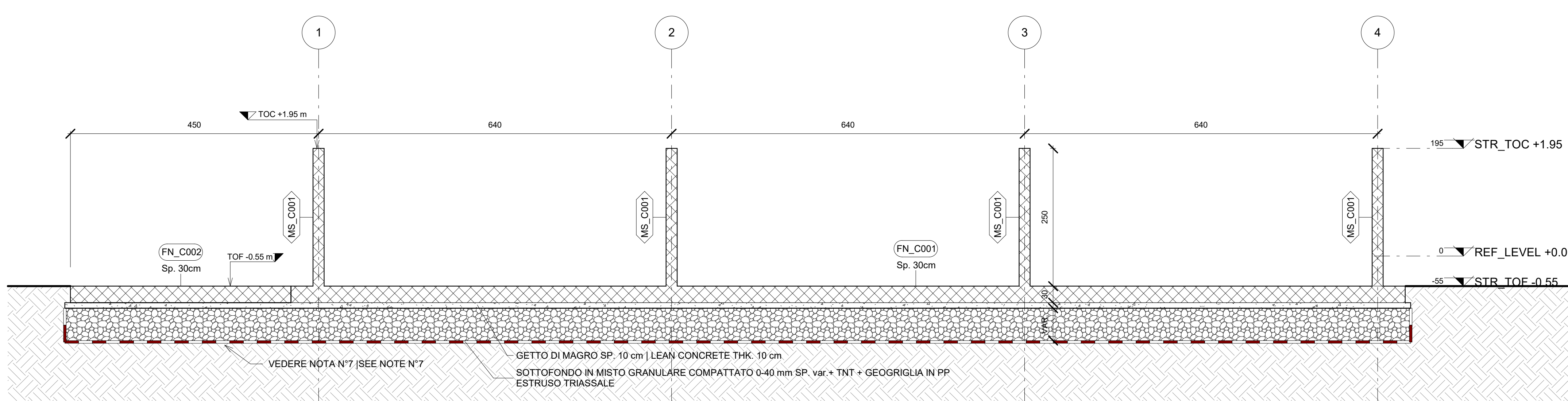


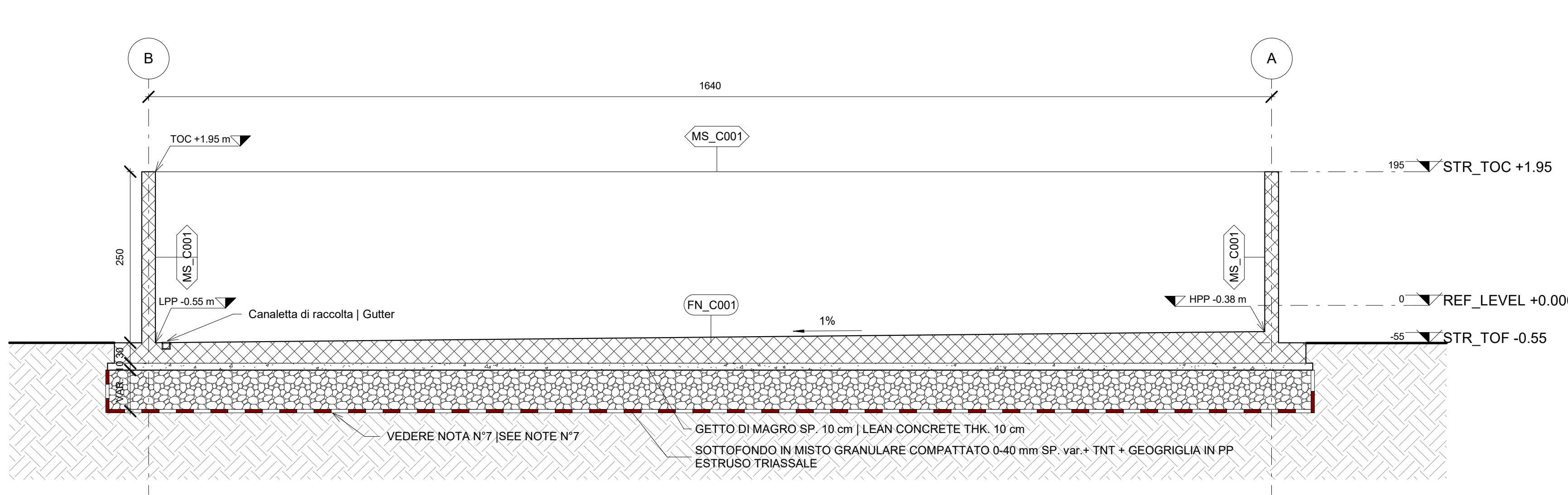
STR_TOF -0.55
1:50



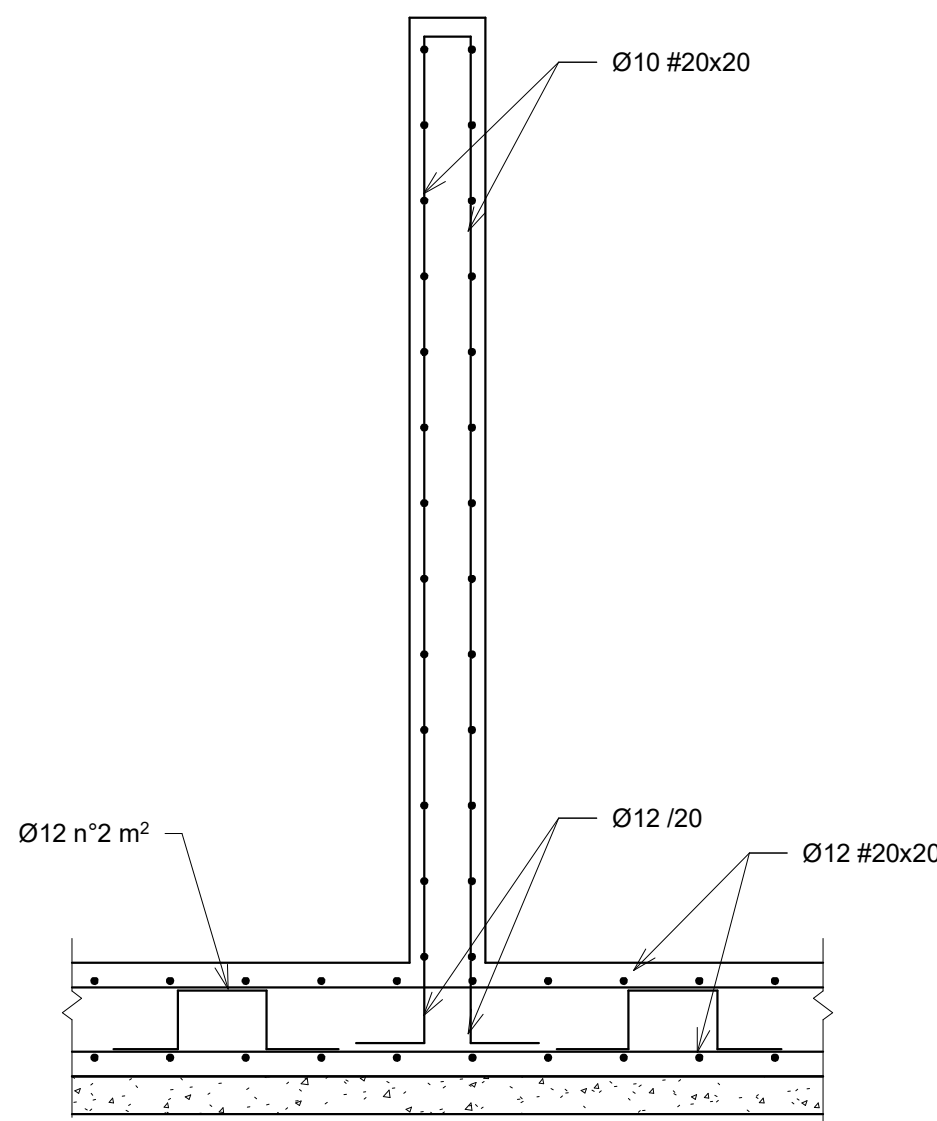
SECTION B-B
1:50



SECTION A-A
1:50



ARMATURA TIPICA / TYPICAL REINFORCEMENT DETAIL
1:20



01_INCIDENZE ARMATURE			
TIPO CARPENTERIA	INCIDENZA ARMATURA	VOLUME	PESO ARMATURA
MURI STRUTTURALI			
MS_C001	100.00 kg/m³	51.80 m³	5180.00 kg
PLATEE DI FONDAZIONE			
FN_C001	90.00 kg/m³	105.41 m³	9487.30 kg
FN_C002	90.00 kg/m³	20.88 m³	1879.20 kg
FN_PENDENZA	90.00 kg/m³	24.41 m³	2196.52 kg
		202.50 m³	18743.02 kg

TIPOLOGICI / TYPE	
TAG	DESCRIZIONE / DESCRIPTION
FN_C001	PLATEA DI FONDAZIONE CON PENDENZA 1% IN CA SP. MEDIO 30 cm SLOPPED FOUNDATION SLAB 1%
FN_C002	AVARAGE THK. 30 cm
MS_C001	PLATEA DI FONDAZIONE SP. 30 cm FOUNDATION SLAB THK. 30 cm
	MURO IN CA SP. 20 cm CONCRETE WALL THK. 20 cm

NOTE GENERALI / GENERAL NOTES	
1.	La quota relativa +0.00 corrisponde alla quota assoluta +61.800 m.s.l.m [The relative elevation +0.00 corresponds to the absolute elevation +61.800 m a.s.l.]
2.	Le quote altimetriche sono espresse in metri [Altimetric elevations are expressed in meters;
3.	Tutte le misure sono espresse in cm salvo ove espressamente indicato] [All measurements are expressed in cm unless otherwise specified]
4.	Per NOTE E SIMBOLI fare riferimento all'elaborato SAR-STR-T-001 For NOTES AND SYMBOLS, refer to drawing SAR-STR-T-001.
5.	Per la TABELLA MATERIALI fare riferimento all'elaborato SAR-STR-T-002 For the MATERIAL TABLE, refer to drawing SAR-STR-T-002.
6.	Per dettagli Waterstop vedere elaborato SAR-STR-T-009 For Waterstop details refer to SAR-STR-T-009.
7.	Per dettagli di trattamento sottofondazione vedere elaborati SAR-STR-T-004 e SAR-STR-T-020 For soil replacement and details see SAR-STR-T-004 e SAR-STR-T-020.

Nr.	Date	Review Description	Reviewed by
01	30/04/2025	PRELIMINARY DESIGN - ISSUE FOR BIDDING	AS

Phase		PRELIMINARY DESIGN	
Subject		SARMATO (PC)	
		Plant for the production of biomethane from agricultural by-products and zootechnical waste Impianto per la produzione di biometano da sottoprodotti agricoli e reflui zootecnici	
Client		Designer	
APIS PV1 società agricola srl Via Gianni Brida 4 39100 Bolzano (BZ) P.IVA IT03171440211		KELSE Engineering srl Corso Galileo Ferraris 70 10129 Torino (TO)	
Planner			
VORN Bionergy Italia srl Via Alessandro Volta 13a 39100 Bolzano (BZ) P.IVA IT03025520218			
Nr. Drawing		Description	
SAR-STR-T-011		Biofiltro e scrubber - Carpenterie e sezioni / Biofilter and Scrubber - Formworks and Section	
Designer	Controlled	Scale	Date
KELSE	AS	Come indicato	30/04/2025
		Revision	01